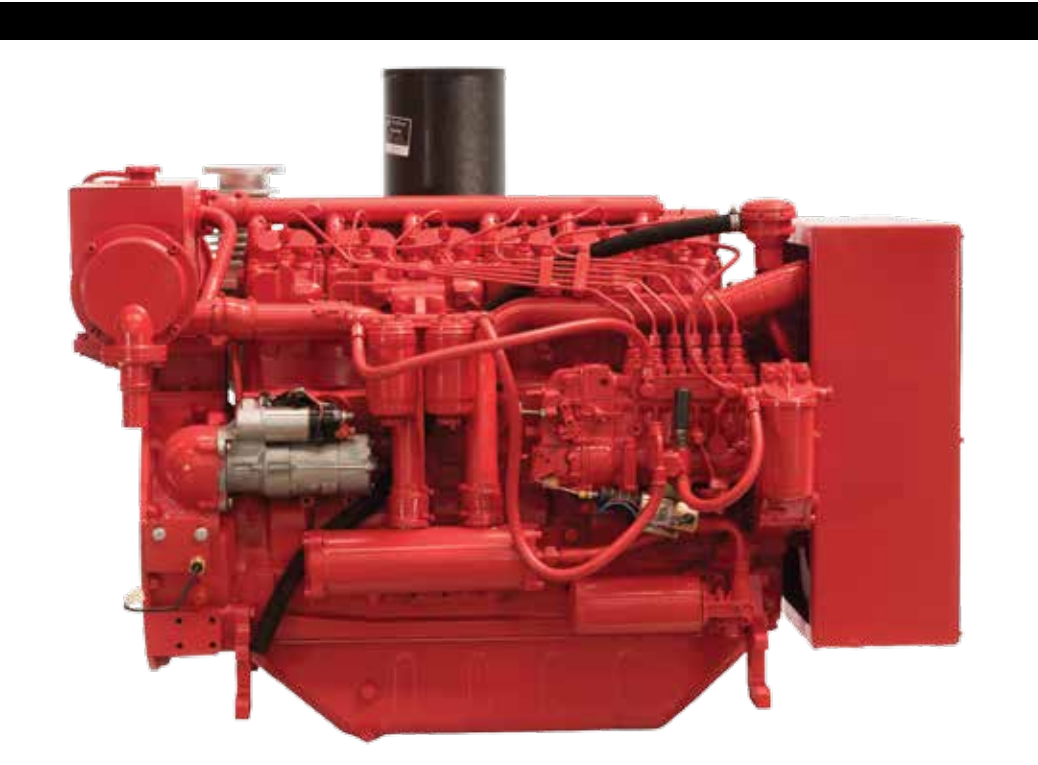


WEICHAI

WP6 155kw | 207hp



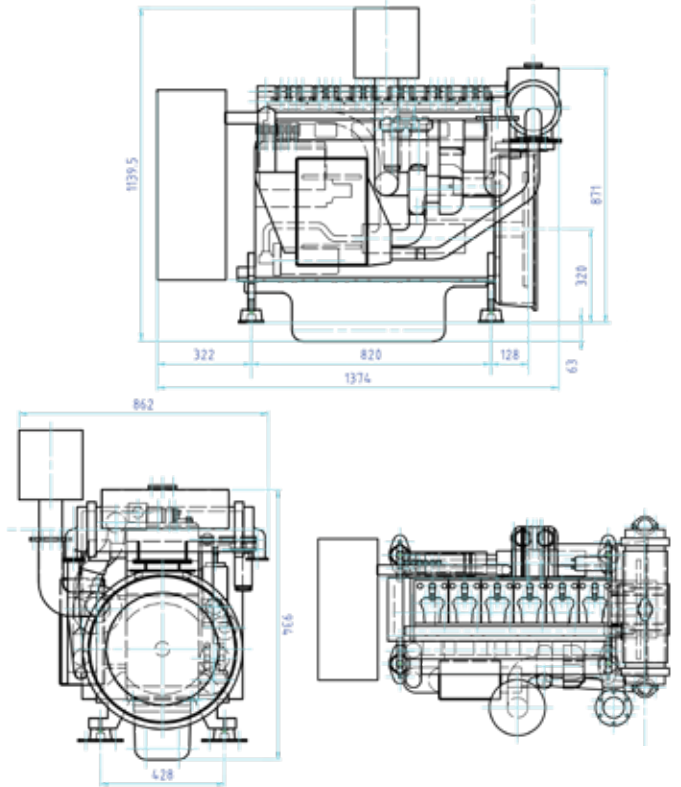
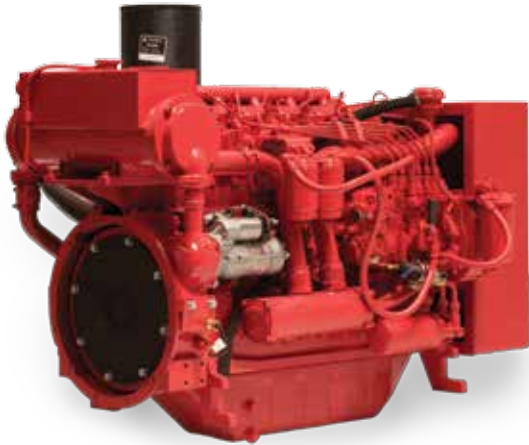
Looking for the engine that sits in the hard to find horsepower ranges?
Want simple mechanical reliability, minimum electronics maximum mechanical reliability?

WEICHAI IS THE ANSWER.

- 1 year unlimited hour warranty
- Fully backed warranty and support
- Full range of parts in stock
- Proven track record
- Ultimate reliability - Trusted to power fire pumps in high rise and commercial buildings

WP6 155kw | 207hp

Number of Cylinders	6
Voltage	24 V
Flywheel Housing (SAE)	2
Flywheel (SAE)	11.5"
Cooling	Heat Exchanger
Aspiration	Turbo Charged
Rotation	Clock Wise
Weight (kg)	750
Compression Ratio	18:1
Displacement (litres)	6
Engine Type	4 Stroke
Bore & Stroke (mm)	102 x 188



Certified Power Rating

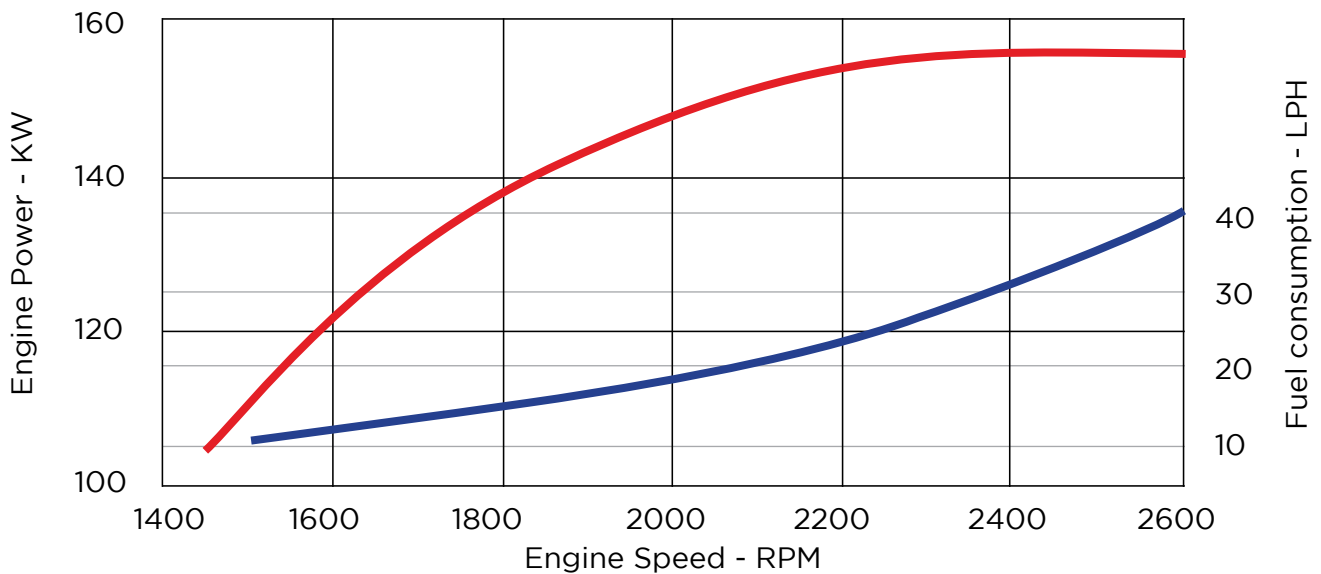
- * Each engine is factory tested to verify power and performance
- * AS2941 power ratings are shown at specific speeds.
These engines can be applied at a single rated RPM setting + or - 50RPM

Engine Performance

Standard Conditions: (SAE J1349, ISO 3046)
25C air inlet temperature
#2 diesel fuel

Restricted

Use only for stand-by fire pump
Applications to AS2941



Proven Quality, Reliability and Performance

Factory 2 135 Derrimut Drv, Derrimut 3030

P 03 8353 2414

F 03 8353 2416

W weichai.com.au

E info@weichai.com.au